



Department
for Education

A scenic view of a coastal path leading to a harbor. The path is paved and bordered by tall grass and low bushes. In the distance, there are buildings and boats in the water under a blue sky with scattered clouds.

**SW & EENL Regional Schools Commissioners
NGA Governors
October 2020**

What matters at this time

- Incredible commitment and resolve shown by school leaders and staff
- Exceptional resilience and relationships
- Focus must be to maintain a secure, safe learning environment and look after leaders and their teams
- Key to this: 'catch up' / assessment, remote learning and curriculum, resilience and financial stability
- Very hard to be strategic at this time
- Our focus will be on supporting trusts, sensible growth and consolidation
- 2020 results will not be used in any decisions
- Ongoing questions: remote learning, testing, exams, funding, OfSTED, sustainability, EHE?, FSM?



The role of RDD



1. Covid support to schools and authorities, including school to school support
2. Trust sector oversight including:
 - Intervention and support for vulnerable schools, academies and trusts
 - Building great MATs in the region
 - Trust reviews, communication and development
3. Places planning and sufficiency including free schools
4. Wider system partnerships – teaching school hubs, recruitment and retention, relationships incl. with authorities and Dioceses

Our support for Chairs and Trustees

Trust Boards play a crucial role in holding leaders to account and driving up standards across academies.

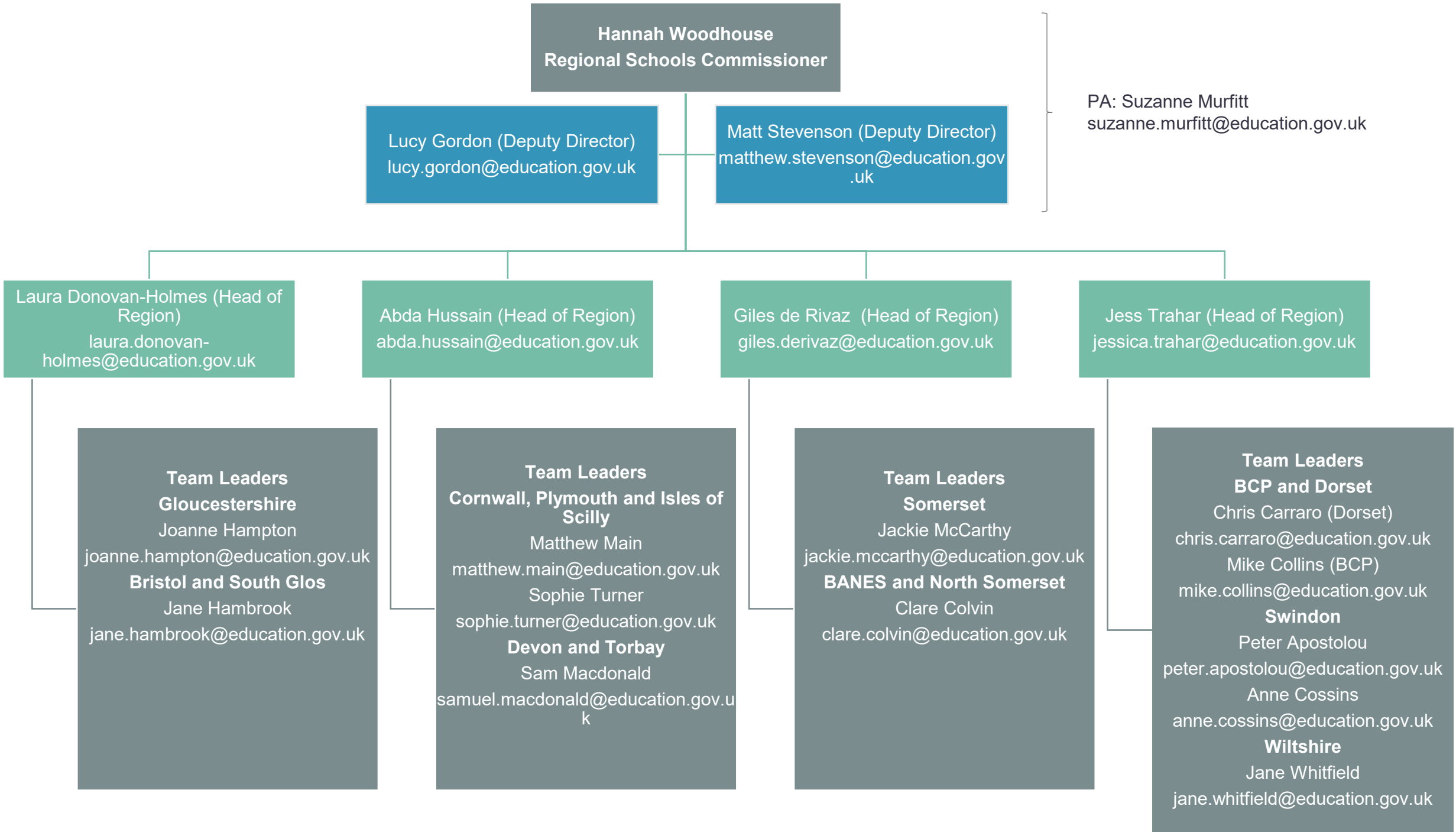
Their work is even more crucial now than ever having to manage the challenge of covid and we have seen some fantastic examples of trusts stepping up and doing some incredible work on this.

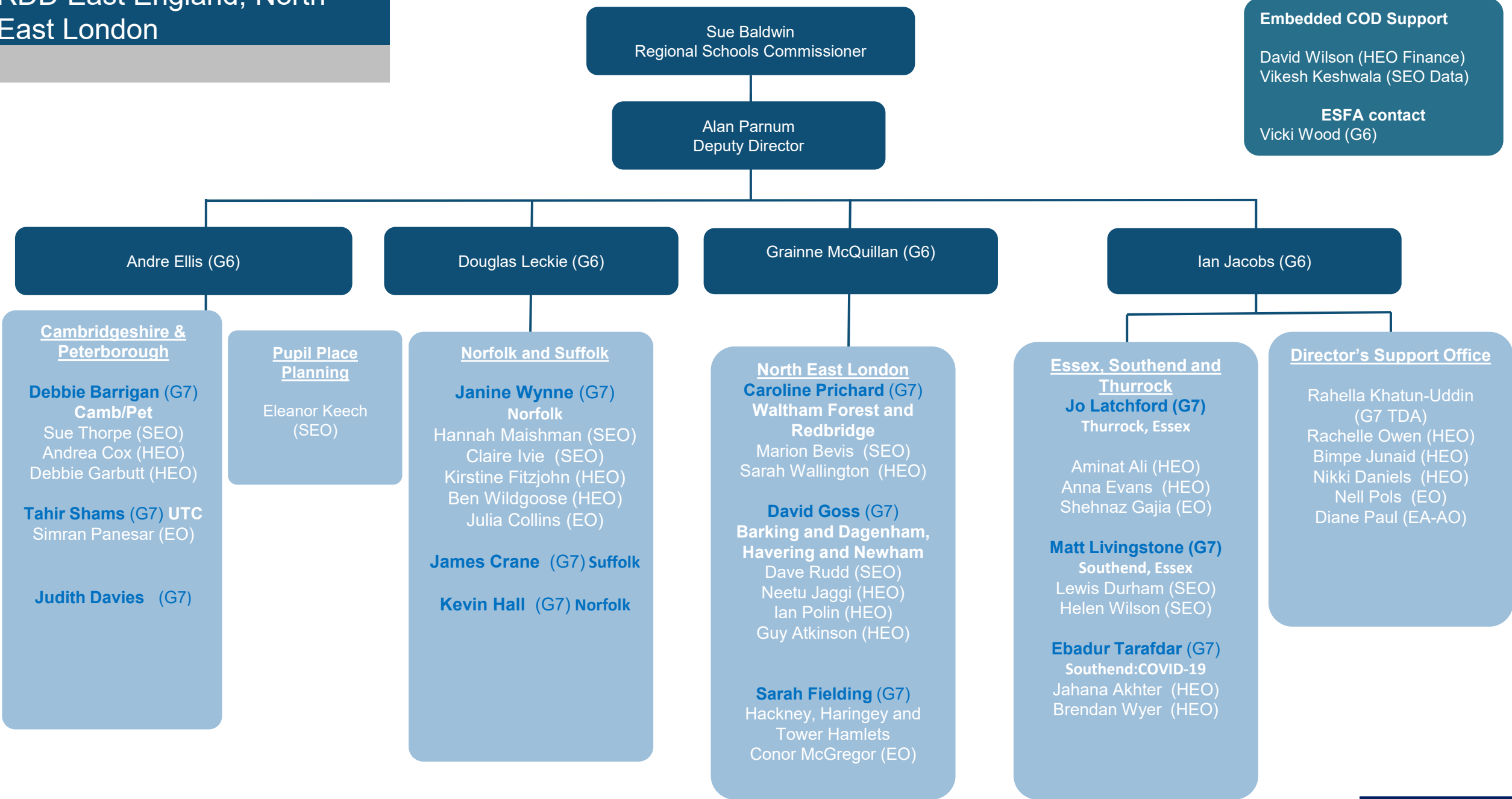
We are committed to build on the great work trust boards are doing by facilitating support and networking across the sector including:

- MAT and Chairs network – termly run by trusts in the region
- Chair's induction led by a governance expert with the aim of supporting new trust chairs to carry out their role and responsibilities effectively
- Chairs learning sets supported by Confederation of School Trusts

Wider support can be offered to trust boards when recruiting for new skills via the Academy Ambassador's programme can help trust's recruit for these posts







Embedded COD Support
David Wilson (HEO Finance)
Vikesh Keshwala (SEO Data)
ESFA contact
Vicki Wood (G6)

A scenic coastal landscape featuring a sandy beach, rocky outcrops, and a steep cliffside. The foreground is filled with vibrant yellow wildflowers. The ocean is visible in the background under a soft, hazy sky.

Thank You



Department
for Education